



## Configuring the CDS-9060 T/R

The CDS-9060 T/R is ideal for those of you who need to communicate via a RJ11 (telephone jack) connection. The communications will be established in 4 parts.

1. Your preexisting modem with the RJ11 connection.
2. The CDS-9060 T/R that has both an analog and digital modem inside.
3. The IWF that handles all circuit- switched (IS-95) or 1XRTT calls.
4. The host modem that will either call or be called upon to collect data.

It is very important that all these parts are configured to communicate at the same speed and modulation. Each modem will have to be preconfigured (synchronized) to the same. Below are examples of AT commands used to set up COM speed and modulation.

The Com speed and modulation will be determined by the speed with which your devices' modem communicates. For example an ATM machine has an internal modem that communicates through a RJ11 (telephone line) at a speed of 1200 bps with 7-E-1.

We will then have to set the CDS-9060 and the host modem accordingly.

First plug the CDS-9060 T/R into an existing serial port on your PC\Laptop.

Make sure that the CDS-9060 T/R is powered up, and then open a terminal emulation program such as HyperTerminal. You will see that the modem is connected to the terminal if the DTR light on the modem is illuminated. It is necessary to communicate through the terminal at the same speed that the modem is configured. By default the CDS-9060 T/R will set to 19200 8-N-1. When you can type AT in the terminal and have an OK response than we are ready to proceed. In the example bellow the AT+IPR=2400,7,E,1 will set the speed, parity, etc.

Next, to talk to the analog modem inside the CDS-9060 T/R you can press \* until the aux light illuminates on the modem. When the aux is on you then give the AT+MS=V22B,1.

This will set the analog modems' modulation to talk at 2400.

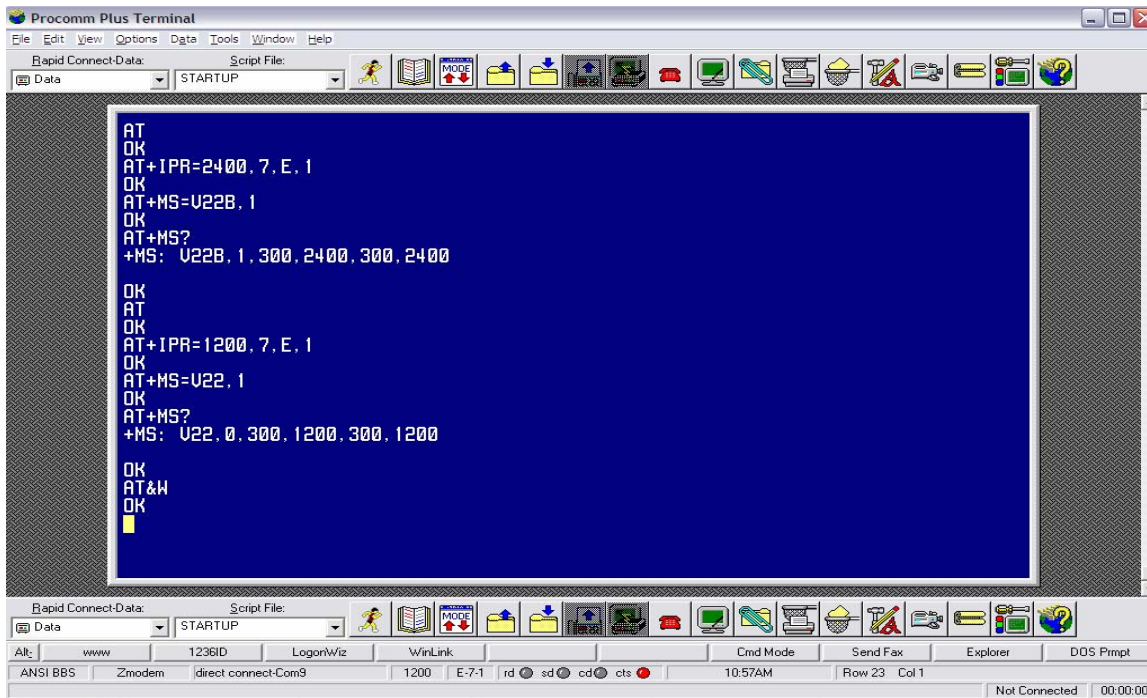
Use the command AT+MS?; this will query the modem to verify the modulation. After all the changes have been made to the modem, the command AT&W will save the changes.

If you type # then the aux light will go off and you will be done configuring the CDS-9060 T/R.

Now plug the RJ11 line from your device into the jack on the modem.

You should now be capable of calling your device or having your device call out.

The examples bellow shows the setup for 1200 and 2400



Example of overall communications

